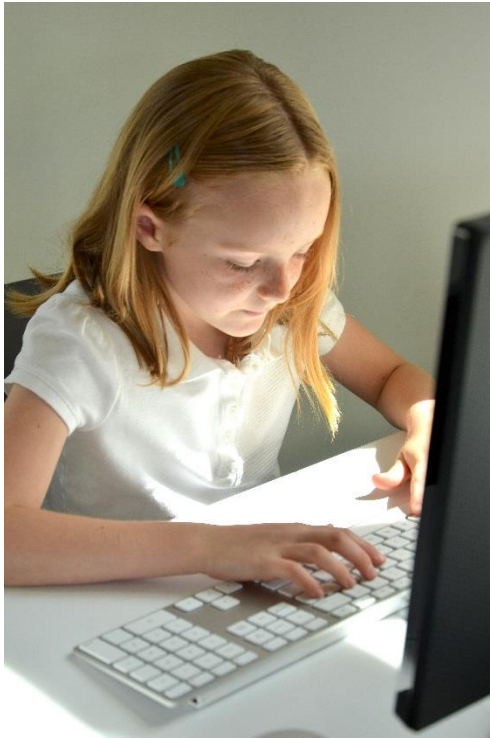
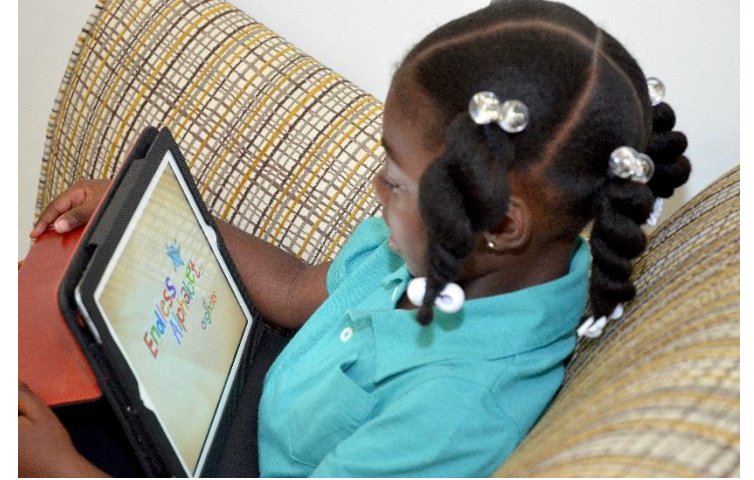


The Charlotte Lab School Uniform



Learning, discovering,
and playing
...in comfort!



Pick a Collared Top...Any Color



Short or long-sleeved, but must be **SOLID** colored (no patterns or prints)

Pick a Bottom...**SOLID** Navy or Khaki



Or Choose a **SOLID** Dress

Navy or Khaki
jumper-style

SOLID color
with a collar



...and pair with **SOLID** leggings or tights...any color!



Stay Warm



... with a **Navy** Sweater, Vest or Jacket!

*Hooded sweaters and sweatshirts are okay, but hoods may not be worn inside the school.

Stay safe and comfortable while working and walking



... with **SOLID** colored, closed-toe shoes
(preferably sneakers; no flip-flops or boots)

Show your Charlotte Lab School Spirit



...with a Logo on your shirt or jacket!

Help us raise money while you shop...



Families may purchase uniforms **at any store** of their choosing. However, we encourage families to purchase uniforms from Lands End because Charlotte Lab School receives a percentage of all purchases (and we have made it very easy to know what's “in uniform” because they have customized a site for us).

It's difficult to find "solid" colored footwear. How "solid" does the color need to be?

We understand that many sneakers have logos and stripes/designs! There are some options we show on the footwear page, but do your best to find a pair of sneakers that is *mostly* one color.

What color do socks and hair accessories need to be?

Socks and hair accessories can be any color. Go crazy! (Well, not too crazy...they shouldn't be distracting to your classmates.)

Can I wear my hat/baseball cap?

Hats are allowed to come to school, however they may NOT be worn inside the school building. Students may put them on while outside (as protection from sun or cold) but must take them off anytime we are inside.

Mom, why can't I just wear the shirt and leggings?

Sorry, you will need to include either a uniform (navy/khaki) jumper dress, skirt, or shorts. There are lots of choices (but we still want it to look like a uniform)!

Dad, why can't I wear my flip-flops/crocs/Uggs?

Since we will be moving around A LOT, EVERY DAY, we want you to be safe from tripping, falling, and losing a shoe!

FAQs

Mom, can I wear sweatpants/yoga pants?

Yes, however they must be neat, well-fitting, and khaki or navy. We suggest you save them for cold days!

Dad, do I HAVE to tuck in my shirt?

Yes, we want to look neat for the very important work you will be doing at the Lab School every day!

Does outerwear also need to be navy?

Coats that will be worn outside the building, to and from school, need NOT be navy blue. However, students will only be able to wear navy coats/sweaters/jackets indoors. We will be selling some special Charlotte Lab School jackets that will be allowed indoors. We hope to have a variety of Charlotte Lab School clothing items available for sale at the Orientation Night in May.